

MC250

ELECTRIC BATTERY OPERATED CRANE
MAX CAPACITY 25 t



Pick&Carry Cranes



JMG Cranes s.r.l. a socio unico

“Società sottoposta ad attività di direzione e coordinamento di Compart Italia srl”

Sede Legale: Via Dante, 15 - 26100 CREMONA | Uffici e stabilimento: Via Sito Nuovo, 14 - 29010 Sarmato - PC - Italy
C.F. e p.iva 05896090965 | Capitale Sociale Euro 84.000,00 i.v.
T +39 0523 8486 | F. +39 0523 848000 | E. info@jmgcranes.com | www.jmgcranes.com

Edition 01/2016
© 2016 JMG Cranes srl All rights reserved



MC250 25 t

DRIVING:	Front by nr. 2 electric motors 12kW 96V AC, insulation class H
BATTERY:	96V 1125Ah. LED battery meter indicator and electrolyte level indicator on dashboard. Autonomy: 8 working hours
BRAKES:	Hydraulically foot controlled service brake on all wheels, hydraulically automatic or button controlled parking brake on front wheels
FRAME:	Fabricated from preformed and welded quality steel plate with built-in counterweight
DRIVER'S PROTECTION:	In quality steel, full visibility with safety glass on top, front, rear and right side of the operator
WHEELS:	Front nr. 4 superelastic 355x50-20" Rear nr. 2 superelastic 355x50-20"
BOOM:	3 elements boom, fully hydraulically proportionally telescoping, fabricated from preformed and welded quality steel plate. Boom tilting angle +60°/-7°
REMOVABLE COUNTERWEIGHT:	Designed for a fast assembling and disassembling to optimize the load on axles and the pressure to ground
HYDRAULIC SYSTEM:	Powered by a silenced gear pump (23kW). Actuators controlled by a proportional electrical controlled distributor complete with electronic joystick. Filter and safety valves. 22 MPa working pressure
STEERING:	Rear steering by hydraulic motor controlled by hydrostatic power steering system complete with load sensing priority valve
MOTOR PUMP:	1x16kW 96V AC, 1x12kW 96V AC insulation class H
L.M.I.:	Electronic load moment indicator system complying to CE safety standards, complete with display showing: load lifted, maximum admitted load, tilting percentage, operating radius, angle, outreach and complete with warning lights for the operating status
WEIGHT:	Kg 24400 including Kg. 4600 of removable counterweight
OPTIONS ON REQUEST:	Hydraulic winch, front outriggers, manually or hydraulically bending jib, men basket, chain hoist, fork attachment, on board battery charger, battery watering system, closed cabin, ATEX conversions, customer color, non-marking tires, radio remote control
CRANE CLASSIFICATION ACCORDING TO UNI ISO 4301-1:	A3
EU CE STANDARDS:	2006/42 CE MD - 2004/108 CE EMC - 2006/95 CE LVD - 2000/14 CE and following modifications
REFERENCE STANDARDS:	EN 13000: 2010 UNI ISO 4301-2:2011 and following modifications



ARTICULATED REAR GROUP



MOBILE HEAD

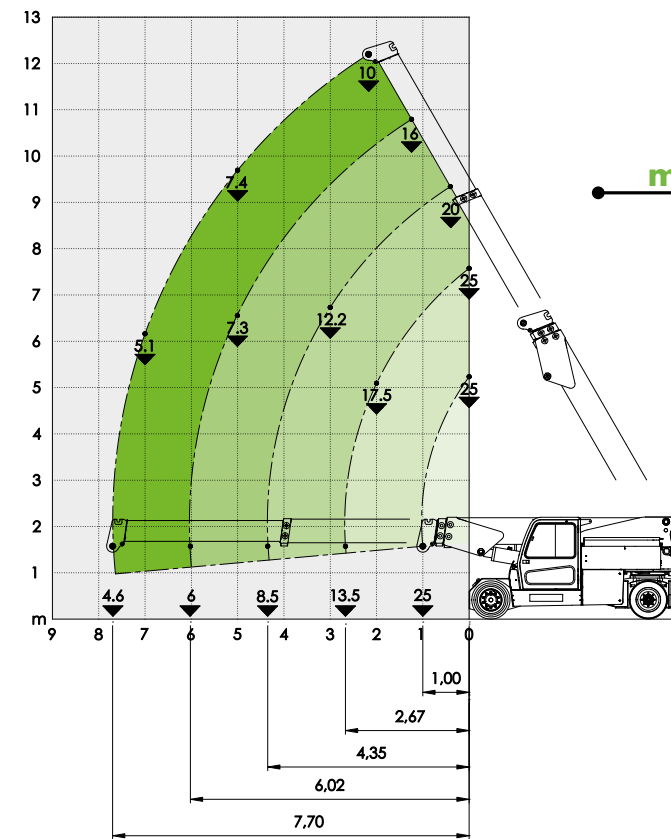


FRONT OUTRIGGERS (OPTIONAL)

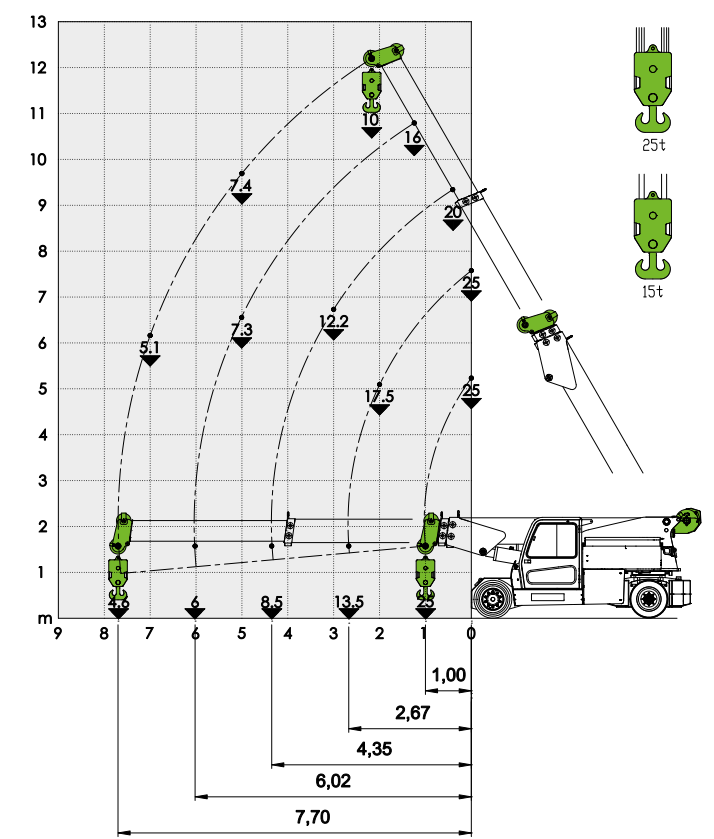


SEAT

BASIC CRANE LOAD CHART



LOAD CHART HYDRAULIC WINCH



DIMENSIONS

