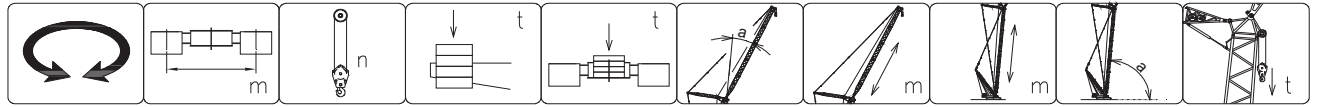


SENNEBOGEN 5500-200

15041 087 / 15

3.2 Hijstabel wipjib, toren 85° - 29.9 m

serienummer: 5500.5.228



	11 m/s 24.3 m n= 4	11 m/s 29.9 m n= 4	11 m/s 35.5 m n= 3	11 m/s 41.1 m n= 3	11 m/s 46.7 m n= 2	11 m/s 52.3 m n= 2		

11.0	11.8/50.5	75.0						
12.0	50.4	74.6						
13.0	49.2	72.1	13.3/41.7	75.0				
14.0	48.1	69.6	40.6	73.6	14.7/34.9	75.0		
15.0	48.0	67.0	39.8	71.5	34.4	74.6		
16.0	47.9	64.4	39.0	69.5	33.9	72.9	16.2/29.6	75.0
18.0	43.7	58.9	37.6	65.3	32.5	69.4	29.1	72.4
20.0	39.3	53.1	36.5	60.9	31.8	65.9	28.3	69.4
22.0	35.6	46.7	34.4	56.4	31.0	62.3	27.6	66.3
24.0	32.3	39.6	31.4	51.5	30.2	58.5	27.1	63.2
26.0	29.2	31.0	28.9	46.3	27.8	54.6	26.7	60.0
28.0	26.4	18.9	26.4	40.6	25.6	50.4	24.9	56.7
30.0	28.7/24.3	12.0	24.1	34.0	23.7	46.0	23.1	53.3
32.0			22.1	25.9	21.7	41.2	21.5	49.6
34.0			19.1	13.5	20.1	35.9	19.9	45.8
36.0			34.2/18.7	12.0	18.6	29.7	18.4	41.7
38.0					16.8	21.8	17.1	37.2
40.0					39.6/14.6	12.0	15.9	32.1
42.0							14.7	26.1
44.0							12.9	18.4
46.0							45.1/11.7	12.0
48.0								
50.0							11.3	23.2
52.0							9.6	15.3
54.0							50.6/9.0	12.0
56.0								
58.0							8.3	20.5
60.0							7.0	12.4
62.0							56.1/6.9	12.0
64.0								
66.0								
68.0								
70.0								
72.0								
74.0								
76.0								
78.0								
80.0								
82.0								
84.0								

Jib strijken bij:

[m/s]	24	24	24	24	24	24		
-------	----	----	----	----	----	----	--	--

Toren strijken bij:

[m/s]	28	28	28	28	28	28		
-------	----	----	----	----	----	----	--	--

Opmerkingen:

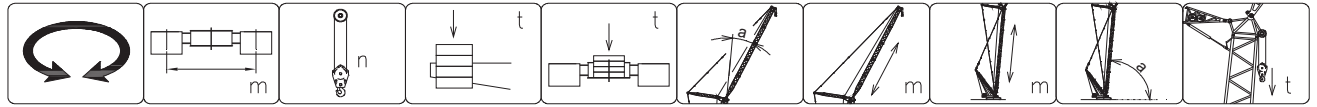
1. Waarden gemarkeerd met (*) vereisen speciale voorzieningen.
2. 13.0/49.2 = radius/capaciteit

SENNEBOGEN 5500-200

15041 087 / 21

3.3 Hijstabel wipjib, toren 75° - 29.9 m

serienummer: 5500.5.228



	11 m/s 24.3 m n= 4	11 m/s 29.9 m n= 4	11 m/s 35.5 m n= 3	11 m/s 41.1 m n= 3	11 m/s 46.7 m n= 2	11 m/s 52.3 m n= 2		
20.0	20.9/34.5	65.0						
22.0	32.7	62.1	23.3/29.7	65.0				
24.0	29.8	56.5	28.8	63.5	25.7/25.6	65.0		
26.0	27.0	50.5	26.4	59.0	25.3	64.4		
28.0	24.5	43.9	24.2	54.4	23.3	60.7	22.5	65.0
30.0	22.4	36.2	22.1	49.4	21.5	56.9	20.8	61.9
32.0	20.6	26.6	20.3	44.0	19.8	52.9	19.3	58.6
34.0	33.8/19.1	12.0	18.7	37.9	18.2	48.6	18.0	55.3
36.0			17.3	30.8	16.9	44.0	16.6	51.8
38.0			16.1	21.6	15.6	39.0	15.4	48.0
40.0			39.3/15.3	12.0	14.5	33.4	14.3	44.1
42.0					13.6	26.6	13.3	39.8
44.0					12.7	17.5	12.5	35.1
46.0					44.8/12.4	12.0	11.7	29.7
48.0							10.9	23.2
50.0							10.3	13.8
52.0							50.3/10.2	12.0
54.0								
56.0								
58.0								
60.0								
62.0								
64.0								
66.0								
68.0								
70.0								
72.0								
74.0								
76.0								
78.0								
80.0								
82.0								
84.0								
86.0								
88.0								
90.0								
92.0								
94.0								
96.0								
98.0								

Jib strijken bij:

[m/s]	24	24	24	24	24	24		
-------	----	----	----	----	----	----	--	--

Toren strijken bij:

[m/s]	28	28	28	28	28	28		
-------	----	----	----	----	----	----	--	--

Opmerkingen:

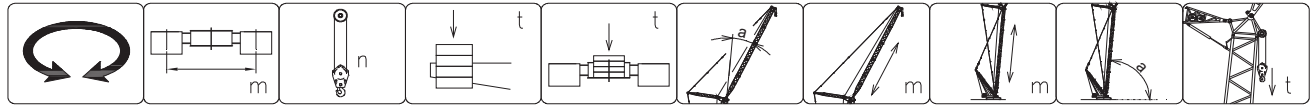
1. Waarden gemarkeerd met (*) vereisen speciale voorzieningen.
2. 24.0/29.8 = radius/capaciteit

SENNEBOGEN 5500-200

15041 087 / 27

3.4 Hijstabel wipjib, toren 65° - 29.9 m

serienummer: 5500.5.228



	11 m/s 24.3 m n= 4	11 m/s 29.9 m n= 4	11 m/s 35.5 m n= 3	11 m/s 41.1 m n= 3	11 m/s 46.7 m n= 2	11 m/s 52.3 m n= 2		
28.0	29.4/21.1	55.0						
30.0	20.6	53.3						
32.0	18.9	46.9	32.6/18.0	55.0				
34.0	17.4	39.8	17.0	51.7	35.8/15.3	55.0		
36.0	16.1	31.3	15.8	46.5	14.9	53.9		
38.0	15.0	19.3	14.6	40.7	14.1	50.6	39.1/13.2	55.0
40.0	38.7/14.6	12.0	13.6	34.2	13.1	46.1	12.8	53.7
42.0			12.7	26.2	12.2	41.3	11.9	49.7
44.0			11.9	14.0	11.4	36.0	11.1	45.9
46.0			44.2/11.8	12.0	10.6	29.9	10.4	41.8
48.0					10.0	22.1	9.7	37.3
50.0					49.7/9.5	12.0	9.1	32.3
52.0							8.5	26.3
54.0							8.0	18.7
56.0							55.2/7.7	12.0
58.0							7.2	29.1
60.0							6.7	23.4
62.0							6.3	15.6
64.0							60.6/6.2	12.0
66.0							5.2	20.7
68.0							4.9	12.7
70.0							66.1/4.8	12.0
72.0								
74.0								
76.0								
78.0								
80.0								
82.0								
84.0								
86.0								
88.0								
90.0								
92.0								
94.0								
96.0								
98.0								
100.0								
102.0								
104.0								
106.0								

Jib strijken bij:

[m/s]	24	24	24	24	24	24		
-------	----	----	----	----	----	----	--	--

Toren strijken bij:

[m/s]	28	28	28	28	28	28		
-------	----	----	----	----	----	----	--	--

Opmerkingen:

1. Waarden gemarkeerd met (*) vereisen speciale voorzieningen.
2. 32.0/18.9 = radius/capaciteit